



C2000
Cylinders



C2000 Cylinders

CYLINDER SECURITY – Attack Resistance

- Drill resistance, with hardened steel driver and pin in first position.

KEY RELATED SECURITY

- Bitting system with 5 pins, depth 0.44 mm.
- Over 30,000 possible combinations (different keys).

DURABILITY

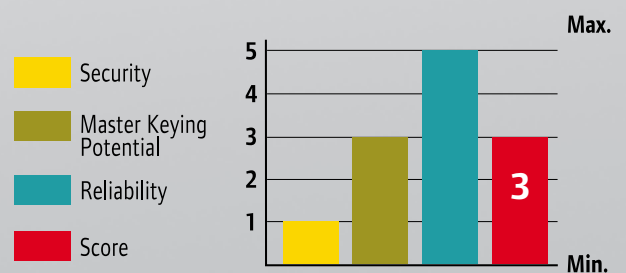
- Tested up to 100,000 cycles.

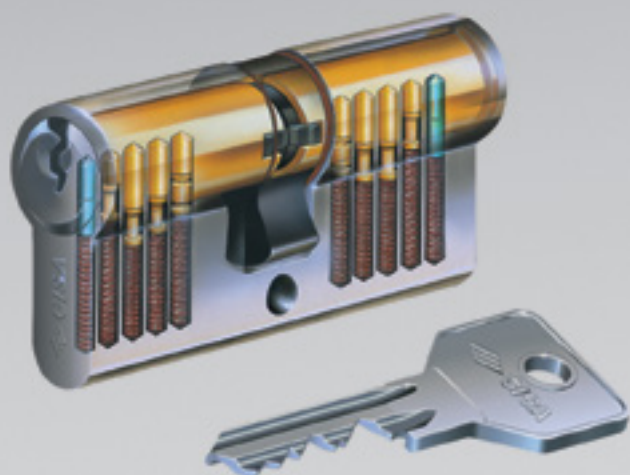
EN 1303:2005

- Compliant with the European Standard EN 1303:2005.
 - Attack Resistance: 0 0 1 2
 - Key Related Security: 4 1 2 3 4 5 6
 - Durability: 6 4 5 6

APPLICATIONS

- Good potential for side entrance access management in offices and factories, shopping centers, universities and hospitals.



**Technical features:****CYLINDER:**

- 5 pin key biting system (3, 4 pins for shorter sizes).
- Brass body.
- Brass plug.
- Self-lubricated sintered steel DIN cam.
- Pins:
 - in brass
 - in hardened steel in first position.
- Stainless steel side securing balls.
- Drivers:
 - in brass
 - in hardened steel in first position.
- Phosphor bronze springs.

KEY:

- Material: special nickel brass alloy.
- Thickness: 2.2 mm.
- Depth 0.44 mm.
- Compatible with protective rose.
- Numbered key head.

Finishes:

- Standard: ground brass (fin. 00)
- On request:
 - nickel-plated brass (fin. 12)
 - polished brass (fin. 66)

On request:

- KA, MK, GMK, GGMMK, CE, C5, PP and their variations.

Supplied as standard:

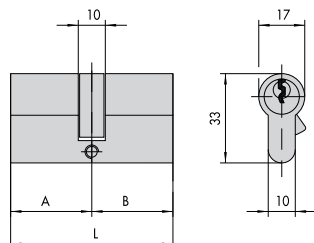
- Fixing screw
- 3 keys:
 - item 1.01070.10.1 with 5 pins
 - item 1.01070.05.1 with 4 pins
 - or alternatively, item 1.01070.01.1 with 3 pins.

Type	Description	Comm. dim.	L	A	B	Pins	Key item	Unit weight Kg	Pieces	ITEM				
										Type	Dim.	Hand	Fin.	Pers. Spec.
	• Double cylinder	22/22	43,4	21,7	21,7	3	1 01070 01 1	0,172	12	1	OG300	02	0	
		22/27	48,4	21,7	26,7	3	1 01070 01 1	0,192	12	1	OG300	03	0	
		25/25	49,8	24,9	24,9	4	1 01070 05 1	0,189	12	1	OG300	04	0	
		27/27	53,0	26,5	26,5	4	1 01070 05 1	0,200	12	1	OG300	05	0	
		27/33	59,0	26,5	32,5	4	1 01070 05 1	0,216	12	1	OG300	06	0	
		30/30	59,0	29,5	29,5	5	1 01070 10 1	0,216	12	1	OG300	07	0	
		30/33	62,0	29,5	32,5	5	1 01070 10 1	0,212	12	1	OG300	08	0	
		27/37	63,0	26,5	36,5	4	1 01070 05 1	0,237	12	1	OG300	09	0	
		30/35	64,0	29,5	34,5	5	1 01070 10 1	0,233	12	1	OG300	26	0	
		33/33	65,0	32,5	32,5	5	1 01070 10 1	0,233	12	1	OG300	10	0	
		27/43	69,0	26,5	42,5	4	1 01070 05 1	0,250	12	1	OG300	11	0	
		30/40	69,0	29,5	39,5	5	1 01070 10 1	0,250	12	1	OG300	12	0	
		35/35	69,0	34,5	34,5	5	1 01070 10 1	0,250	12	1	OG300	13	0	
		30/43	72,0	29,5	42,5	5	1 01070 10 1	0,258	6	1	OG300	14	0	
		37/37	73,0	36,5	36,5	5	1 01070 10 1	0,266	6	1	OG300	15	0	
		30/45	74,0	29,5	44,5	5	1 01070 10 1	0,230	6	1	OG300	27	0	
		35/40	74,0	34,5	39,5	5	1 01070 10 1	0,266	6	1	OG300	28	0	
		27/53	79,0	26,5	52,5	4	1 01070 05 1	0,283	6	1	OG300	16	0	
		30/50	79,0	29,5	49,5	5	1 01070 10 1	0,291	6	1	OG300	17	0	
		35/45	79,0	34,5	44,5	5	1 01070 10 1	0,283	6	1	OG300	19	0	
		40/40	79,0	39,5	39,5	5	1 01070 10 1	0,300	6	1	OG300	18	0	
		30/55	84,0	29,5	54,5	5	1 01070 10 1	0,300	6	1	OG300	33	0	
		35/50	84,0	34,5	49,5	5	1 01070 10 1	0,300	6	1	OG300	31	0	
		40/45	84,0	39,5	44,5	5	1 01070 10 1	0,250	6	1	OG300	30	0	
		43/43	85,0	42,5	42,5	5	1 01070 10 1	0,250	6	1	OG300	46	0	
		30/60	89,0	29,5	59,5	5	1 01070 10 1	0,316	6	1	OG300	20	0	
		35/55	89,0	34,5	54,5	5	1 01070 10 1	0,316	6	1	OG300	32	0	
		40/50	89,0	39,5	49,5	5	1 01070 10 1	0,316	6	1	OG300	21	0	
		45/45	89,0	44,5	44,5	5	1 01070 10 1	0,325	6	1	OG300	29	0	
		35/60	94,0	34,5	59,5	5	1 01070 10 1	0,312	6	1	OG300	38	0	
		30/65	94,0	29,5	64,5	5	1 01070 10 1	0,350	6	1	OG300	41	0	
		40/55	94,0	39,5	54,5	6	1 01070 10 1	0,312	5	1	OG300	42	0	
		30/70	99,0	29,5	69,5	5	1 01070 10 1	0,350	6	1	OG300	24	0	
		35/65	99,0	34,5	64,5	5	1 01070 10 1	0,312	6	1	OG300	22	0	
40/60	99,0	39,5	59,5	5	1 01070 10 1	0,350	6	1	OG300	25	0			
45/55	99,0	44,5	54,5	5	1 01070 10 1	0,312	6	1	OG300	43	0			
50/50	99,0	49,5	49,5	5	1 01070 10 1	0,350	6	1	OG300	23	0			
45/60	104,0	44,5	59,5	5	1 01070 10 1	0,350	6	1	OG300	54	0			
35/70	104,0	34,5	69,5	5	1 01070 10 1	0,350	6	1	OG300	49	0			
30/80	109,0	29,5	79,5	5	1 01070 10 1	0,350	6	1	OG300	37	0			
40/70	109,0	39,5	69,5	5	1 01070 10 1	0,360	6	1	OG300	35	0			
50/60	109,0	49,5	59,5	5	1 01070 10 1	0,360	6	1	OG300	36	0			
55/55	109,0	54,5	54,5	5	1 01070 10 1	0,360	6	1	OG300	70	0			
60/60	119,0	59,5	59,5	5	1 01070 10 1	0,390	6	1	OG300	40	0			
30/90	119,0	29,5	89,5	5	1 01070 10 1	0,390	6	1	OG300	52	0			
70/70	139,0	69,5	69,5	5	1 01070 10 1	0,440	6	1	OG300	50	0			
	• Double cylinder with clutch system	27/27	53,0	26,5	26,5	4	1 01070 05 1	0,202	12	1	OG301	05	0	
		27/33	59,0	26,5	32,5	4	1 01070 05 1	0,222	12	1	OG301	06	0	
		30/30	59,0	29,5	29,5	5	1 01070 10 1	0,222	12	1	OG301	07	0	
		27/37	63,0	26,5	36,5	4	1 01070 05 1	0,232	12	1	OG301	09	0	
		30/35	64,0	29,5	34,5	5	1 01070 10 1	0,232	12	1	OG301	26	0	
		27/43	69,0	26,5	42,5	4	1 01070 05 1	0,252	12	1	OG301	11	0	
		35/35	69,0	34,5	34,5	5	1 01070 10 1	0,252	12	1	OG301	13	0	
		30/40	69,0	29,5	39,5	5	1 01070 10 1	0,252	12	1	OG301	12	0	
		35/40	74,0	34,5	39,5	5	1 01070 10 1	0,262	12	1	OG301	28	0	
		40/45	84,0	39,5	44,5	5	1 01070 10 1	0,272	12	1	OG301	30	0	
	• Single cylinder with 8 position adjustable cam	25/10	34,5	24,5	10,0	4	1 01070 05 1	0,120	12	1	OG304	18	0	
		30/10	39,5	29,5	10,0	5	1 01070 10 1	0,155	12	1	OG304	02	0	
		33/10	42,5	32,5	10,0	5	1 01070 10 1	0,165	12	1	OG304	09	0	
		35/10	44,5	34,5	10,0	5	1 01070 10 1	0,170	12	1	OG304	07	0	
		37/10	46,5	36,5	10,0	5	1 01070 10 1	0,175	12	1	OG304	10	0	
		40/10	49,5	39,5	10,0	5	1 01070 10 1	0,185	12	1	OG304	03	0	
		43/10	52,5	42,5	10,0	5	1 01070 10 1	0,195	12	1	OG304	11	0	
		50/10	59,5	49,5	10,0	5	1 01070 10 1	0,215	12	1	OG304	04	0	
		55/10	64,5	54,5	10,0	5	1 01070 10 1	0,225	12	1	OG304	35	0	
		60/10	69,5	59,5	10,0	5	1 01070 10 1	0,245	12	1	OG304	05	0	
		64/10	73,5	63,5	10,0	5	1 01070 10 1	0,255	12	1	OG304	21	0	
		70/10	79,5	69,5	10,0	5	1 01070 10 1	0,275	12	1	OG304	06	0	
		80/10	89,5	79,5	10,0	5	1 01070 10 1	0,305	12	1	OG304	20	0	
		94/10	103,5	93,5	10,0	5	1 01070 10 1	0,355	12	1	OG304	13	0	

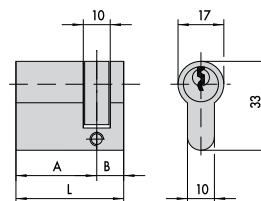
Type	Description	Comm. dim.	L	A	B	Pins	Key item	Unit weight Kg	Pieces Pieces	ITEM				
										Type	Dim.	Hand	Fin.	Pers.
	<ul style="list-style-type: none"> • Double cylinder pre-set for thumb turn installation • ON REQUEST: Thumb turn knobs <ul style="list-style-type: none"> - item 1.06353.00 - item 1.06354.00 	30/30	59,0	29,5	29,5	5	1 01070 10 1	0,237	6	1	0G302	07	0	
		30/35	64,0	29,5	34,5	5	1 01070 10 1	0,250	6	1	0G302	26	0	
		35/30	64,0	34,5	29,5	5	1 01070 10 1	0,250	6	1	0G302	81	0	
		33/33	65,0	32,5	32,5	5	1 01070 10 1	0,255	6	1	0G302	10	0	
		30/40	69,0	29,5	39,5	5	1 01070 10 1	0,270	6	1	0G302	82	0	
		35/35	69,0	34,5	34,5	5	1 01070 10 1	0,270	6	1	0G302	13	0	
		40/30	69,0	39,5	29,5	5	1 01070 10 1	0,270	6	1	0G302	12	0	
		35/40	74,0	34,5	39,5	5	1 01070 10 1	0,285	6	1	0G302	28	0	
		40/35	74,0	39,5	34,5	5	1 01070 10 1	0,285	6	1	0G302	83	0	
		30/50	79,0	29,5	49,5	5	1 01070 10 1	0,300	6	1	0G302	17	0	
		35/45	79,0	34,5	44,5	5	1 01070 10 1	0,300	6	1	0G302	19	0	
		40/40	79,0	39,5	39,5	5	1 01070 10 1	0,300	6	1	0G302	18	0	
		45/35	79,0	44,5	34,5	5	1 01070 10 1	0,300	6	1	0G302	85	0	
		40/45	84,0	39,5	44,5	5	1 01070 10 1	0,315	6	1	0G302	30	0	
		45/40	84,0	44,5	39,5	5	1 01070 10 1	0,315	6	1	0G302	84	0	
		43/43	85,0	42,5	42,5	5	1 01070 10 1	0,318	6	1	0G302	46	0	
		30/60	89,0	29,5	59,5	5	1 01070 10 1	0,330	6	1	0G302	20	0	
		40/50	89,0	39,5	49,5	5	1 01070 10 1	0,330	6	1	0G302	21	0	
		45/45	89,0	44,5	44,5	5	1 01070 10 1	0,330	6	1	0G302	29	0	
		40/55	94,0	39,5	54,5	5	1 01070 10 1	0,350	6	1	0G302	42	0	
		42/50	94,0	44,5	49,5	5	1 01070 10 1	0,350	6	1	0G302	39	0	
		45/55	99,0	44,5	54,5	5	1 01070 10 1	0,360	6	1	0G302	43	0	
		50/50	99,0	49,5	49,5	5	1 01070 10 1	0,360	6	1	0G302	23	0	
		45/60	104,0	44,5	59,5	5	1 01070 10 1	0,375	6	1	0G302	54	0	
		55/50	104,0	54,5	49,5	5	1 01070 10 1	0,375	6	1	0G302	64	0	
		30/80	109,0	29,5	79,5	5	1 01070 10 1	0,390	6	1	0G302	37	0	
		40/70	109,0	39,5	69,5	5	1 01070 10 1	0,390	6	1	0G302	35	0	
		50/60	109,0	49,5	59,5	5	1 01070 10 1	0,390	6	1	0G302	36	0	
60/50	109,0	59,5	49,5	5	1 01070 10 1	0,390	6	1	0G302	89	0			
55/60	114,0	54,5	59,5	5	1 01070 10 1	0,400	6	1	0G302	71	0			
55/65	119,0	54,5	64,5	5	1 01070 10 1	0,420	6	1	0G302	72	0			
60/60	119,0	59,5	59,5	5	1 01070 10 1	0,420	6	1	0G302	40	0			
65/55	119,0	64,5	54,5	5	1 01070 10 1	0,420	6	1	0G302	86	0			
	<ul style="list-style-type: none"> • Double cylinder pre-set for adjustable shaft thumb turn installation • To install with protective rose item 1.06353.00 • ON REQUEST: Thumb turn knobs <ul style="list-style-type: none"> - item 1.06353.00 - item 1.06354.00 	30/30	59,0	29,5	29,5	5	1 01070 10 1	0,260	6	1	0G307	07	0	
		35/30	64,0	34,5	29,5	5	1 01070 10 1	0,270	6	1	0G307	81	0	
		40/30	69,0	39,5	29,5	5	1 01070 10 1	0,280	6	1	0G307	12	0	
		45/30	74,0	44,5	29,5	5	1 01070 10 1	0,290	6	1	0G307	91	0	
		50/30	79,0	49,5	29,5	5	1 01070 10 1	0,300	6	1	0G307	90	0	
		60/30	89,0	59,5	29,5	5	1 01070 10 1	0,320	6	1	0G307	87	0	
		70/30	99,0	69,5	29,5	5	1 01070 10 1	0,340	6	1	0G307	88	0	
	<ul style="list-style-type: none"> • Nickel-plated single cylinder with special cam turned by 90° specially designed for locks series 46305 • 3 keys • Fixing screw 	30/30	59,0	29,5	29,5	5	1 01070 10 1	0,216	12	1	0G303	07	0 12	
	<ul style="list-style-type: none"> • Nickel-plated single cylinder with special cam turned by 90° specially designed for locks series 46305 • 3 keys • Fixing screw 	30/10	39,5	29,5	10,0	5		0,155	12	1	0G305	02	0 12	

Type	Description	For locks series	L	Pins	Key item	Unit weight	Pieces	ITEM				
								Type	Dim.	Hand	Fin.	Pers.
	• Cylinder	1A610	5	1	101070 10 1	0,182	6	1	OG500	00	0	
	• Tubular cylinder	1A611	105,0	5	1 01070 10 1	0,193	6	1	OG200	05	0	
			55,0	5	1 01070 10 1	0,168	6	1	OG200	55	0	
			65,0	5	1 01070 10 1	0,165	6	1	OG200	65	0	
			75,0	5	1 01070 10 1	0,174	6	1	OG200	75	0	
			85,0	5	1 01070 10 1	0,185	6	1	OG200	85	0	
95,0	5	1 01070 10 1	0,182	6	1	OG200	95	0				
	• Pair of cylinders	1A630	5	1	101070 10 1	0,250	6	1	OG115	00	0	
	• Pair of cylinders with external tubular cylinder	1A631, 1A721, 1A731	55,0	5	1 01070 10 1	0,255	6	1	OG150	00	0	

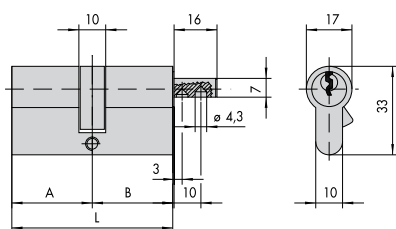
Drawings and Dimensions



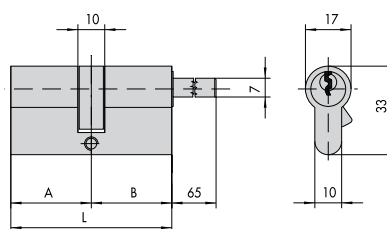
OG300, OG301, OG303



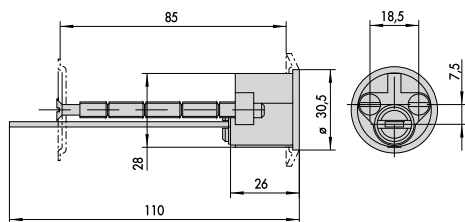
OG314, OG305



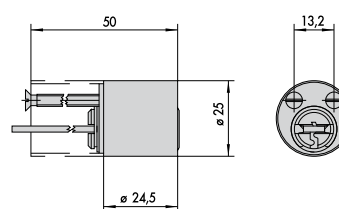
OG312



OG317



OG500



OG200

About Allegion

Allegion (NYSE: ALLE) creates peace of mind by pioneering safety and security. As a \$2 billion provider of security solutions for homes and businesses, Allegion employs more than 7,800 people and sells products in more than 120 countries across the world. Allegion comprises 23 global brands, including strategic brands CISA®, Interflex®, LCN®, Schlage® and Von Duprin®.

For more, visit allegion.com

